

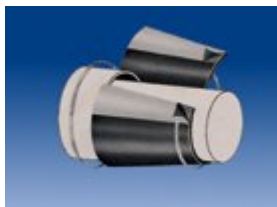


Experience  
Counts!

---

## Model "W" Wrap Around End Seals

---

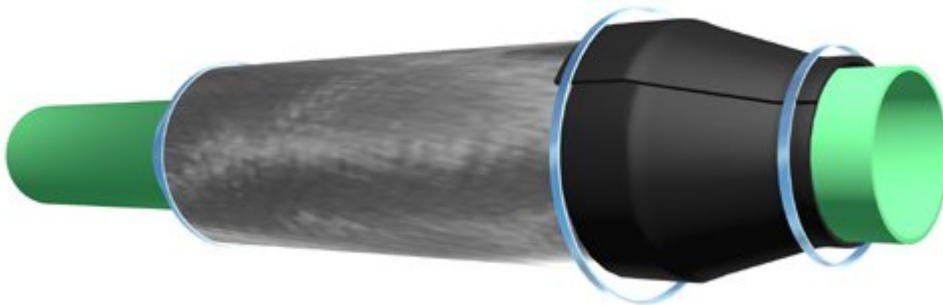


### Description

Model "W" Wrap Around End Seals are designed to accommodate customer supplied specifications so they may be used for any size casing/carrier differential. Manufactured from 1/8" thick specially compounded synthetic rubber, PSI Model "W" end seals are extremely robust, resistant to wide variations in environmental conditions

while eliminating the possibility of foreign material entering the opening between carrier and casing pipes. Included with Model "W" End Seals are two appropriately sized hose clamps which are used to secure the rubber material around both carrier and casing pipes. Installation is quick and easy with only a screw driver needed for tightening the hose clamps.

### Typical Application



## Benefits/Features

- Custom Made to Order
- Quick and Easy Installation
- Carrier Pipe Does Not Need To Be Centered Within Casing
- Can be installed on existing casing installations.
- Screwdriver Is Only Tool Required for Installation
- Designed To Last for the Life of the Piping System
- Heavy Duty Hose Clamps Supplied.
- Self-Curing Seam - simply remove plastic backing and press together.

## Material Specifications

EPDM 60		Buna-N		Neoprene	
Material	EPDM 60	Material	Buna-N	Material	Neoprene
Thickness	1/8" (3.18mm)	Thickness	1/8" (3.18mm)	Thickness	1/8" (3.18mm)
Color	Black	Color	Black	Color	Black
Temperature	250° F. (121° C.)	Temperature	212° F. (100° C.)	Temperature	170° F. (77° C.)
Hardware	304 Stainless Steel Bands w/Worm Screws	Hardware	304 Stainless Steel Bands w/Worm Screws	Hardware	304 Stainless Steel Bands w/Worm Screws
Sizing	Per Customer Specifications	Sizing	Per Customer Specifications	Sizing	Per Customer Specifications

NOTE: Standard casing end seals are designed for below grade use. For above grade applications, please contact PSI.

## Warranty

All products are warranted against failure caused by manufacturing defects for a period of one year. Any product found to be so defective and returned within one year from date of shipment will be replaced without charge. The above warranty is made in lieu of, and we disclaim, any and all other warranties,

expressed or implied, including the warranties of merchantability and fitness for a particular purpose, and buyer agrees to accept the products without any such warranties. We hereby disclaim any obligation or liability for consequential damages, labor costs or any other claims or liabilities of any kind whatsoever.

## Installation

1. Prepare outside surfaces by removing dirt from Casing and carrier pipe.
2. Wrap end seal around carrier pipe and casing pipe, make sure the widest portion of the end seal gets wrapped around the casing pipe.
3. Overlap the edges of the end seal with the release papers facing toward each other.
4. Remove release papers and firmly press together the entire seal area along the edge. Repeat the pressing process to make sure seam is tight.
5. Position banding clamp approximately 1" from the end of the casing pipe and then tighten onto the end seal.
6. Fold end seal in an "S" shape so it will extend into the casing.
7. Position banding clamp approximately 1" from the end of the end seal on the carrier pipe and then tighten. (Make sure the end seal is folded into the casing, to relieve stress during backfilling and allow for expansion and contraction movement.)
8. Repeat on other end of casing.

## How To Order

To order Model "W" Wrap Around End Seals, please indicate the following:

1. Quantity
2. Carrier Pipe O.D.  
(Type and coating thickness if applicable.)
3. Casing Pipe O.D.  
(Type and coating thickness if applicable.)
4. Contact your local distributor or Pipeline Seal & Insulator, Inc.

## Typical Specification

Model W wrap around end seals shall be made with a minimum 1/8" thick synthetic rubber and a self-curing seam. Seam shall have plastic backing release strip, to protect self-curing rubber. Banding clamps are to be 304 stainless steel with worm screws.

End Seals shall be PSI Model W-Wrap Around as manufactured by PSI-Pipeline Seal and Insulator, Inc., Houston, TX. to ISO 9001:2000 standards. A copy of current ISO 9001:2000 registration shall be provided with material submittal.



**DISTRIBUTED BY:**  
**Protection Engineering**  
**PO Box 8996**  
**Pittsburg, CA 94565**  
**Tel: 800.878.8837**  
**[www.corrosioncoatings.com](http://www.corrosioncoatings.com)**